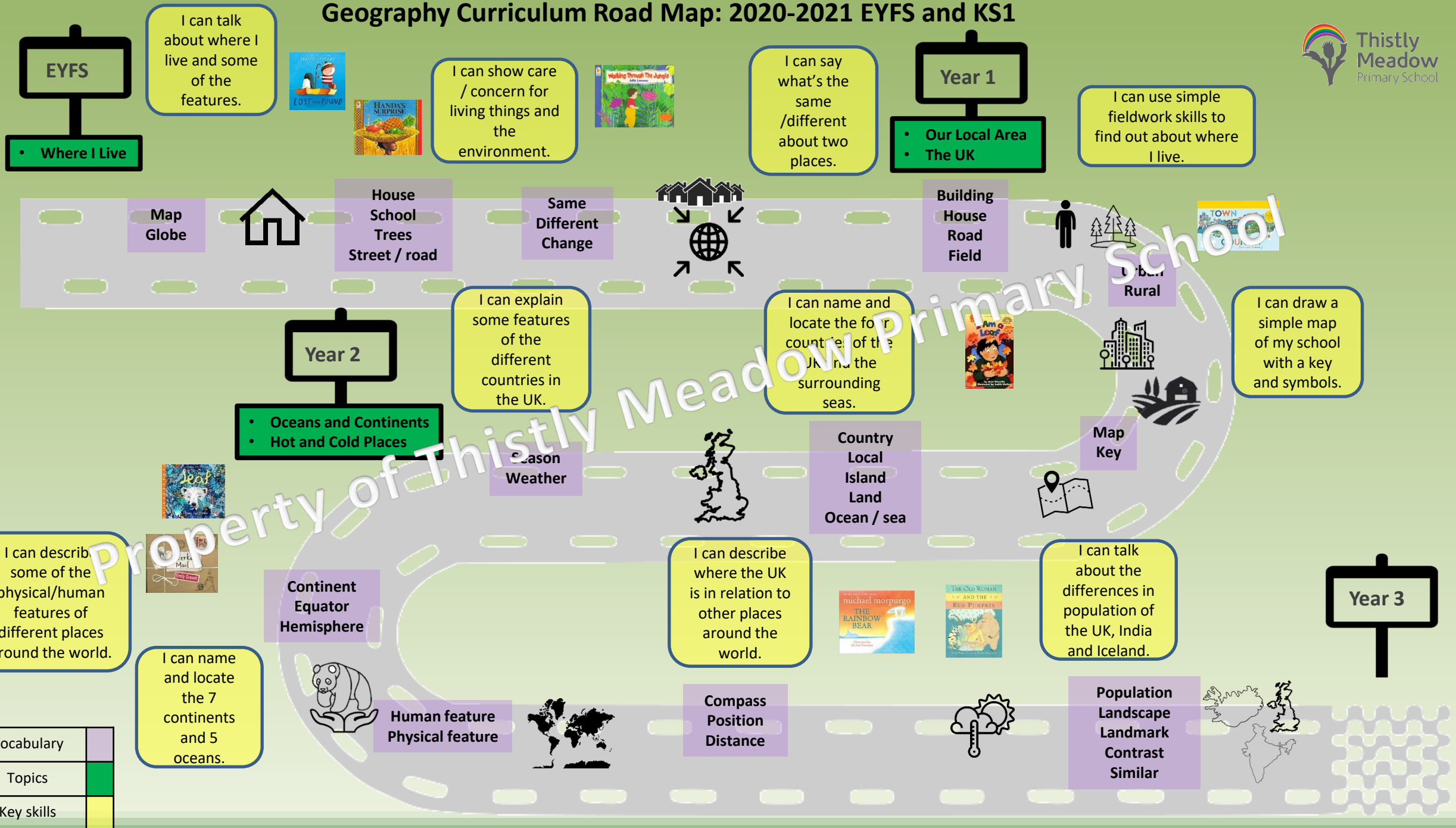


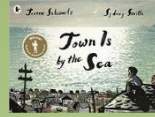
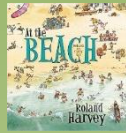
Geography Curriculum Road Map: 2020-2021 EYFS and KS1



Geography Curriculum Road Map: 2020-2021 Lower KS2

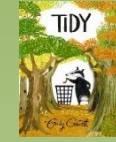
Year 3

I understand the differences between a village, town, city and county.



I can locate Leicestershire on a map.

I can name some of the physical and human features of Leicestershire.



I can use a map to plan and follow a route around my local area.

County
Village
Town
City



Rural
Urban
Outskirts
Locality
Landlocked



Industrial
Agricultural
Land-use



Region
Area
Characteristics
Population

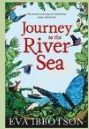


I can compare Leicestershire to another county and talk about the topographical features of both areas.

Year 4

• Rivers
• Biomes

I can understand the features of a river and how they shape the landscape.



I can understand how rivers are formed (through the water cycle).

Water cycle
Evaporation
Condensation

Forming
Course
Erosion
Abrasion



Scale
Compass directions



Fieldwork
Inquiry
Data
Study

I can carry out a fieldwork study of my local area by collecting data to answer an enquiry question.

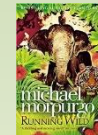


I can name and locate rivers around the world.



Source
Mouth
Meanders

I know what a biome is and can name different biomes.



I understand how humans impact on different biomes.



I can talk about the similarities and differences between biomes.

Year 5

Conservation
Sustainability



Biome
Wildlife
Vegetation
Climate
Conditions



Longitude
Latitude
Tropic of Capricorn
Tropic of Cancer

Vocabulary

Topics

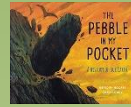
Key skills

Geography Curriculum Road Map: 2020-2021 Upper KS2

Year 5

- Mountains, Volcanoes, Earthquakes
- Renewable Energy

I understand what the earth is made of.



I understand how volcanoes are formed and why they erupt.



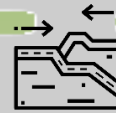
I understand what causes an earthquake and how humans respond.

I can explain the advantages and disadvantages of renewable and non-renewable energy sources.

Active
Dormant



Tectonic plates
Epicentre
Richter scale
Magnitude



Fault-block mountain
Fold mountain
Ravine



Sustainable
Unsustainable



I understand the long-term impact of energy production..

I know how we can be more sustainable.

Year 6

- World in Danger!
- Globalisation

I can understand what is meant by a natural disaster and give different types.

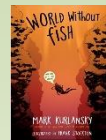
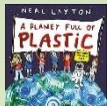
Climate change
Global Warming
Impact

Greenhouse gas
Ozone layer
Carbon footprint
Energy security



Renewable
Non-renewable
Fossil fuel
Biodegradable

I can explain the structure of the earth and identify its plate boundaries.



I can describe what globalisation is.



I can explain how the development of technology has impacted globalisation.

I can justify whether globalisation affects the gap between the rich and the poor.

I can understand and explain the main features of coastal erosion.



Natural disaster
Coastal Erosion
Conservation

Interconnection
Interdependence



Trade (export, import)
Economy
Culture
Migration



Communication
Interaction
Process
Technology

Year 7



Vocabulary

Topics

Key skills